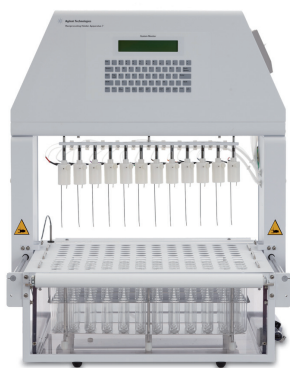


Agilent BIO-DIS Dissolution Apparatus (G7972A) Supplies

Apparatus 3—Reciprocating Cylinder Apparatus 7—Reciprocating Holder

Agilent Technologies is committed to optimizing your laboratory's productivity, so we have produced this list of the most commonly ordered supplies and parts for the Agilent BIO-DIS Dissolution Apparatus.



Outer Media Tubes

Description	Part Number
Outer media tube, flat bottom, 1000 mL	27-5120
Outer media tube, USP, 300 mL	27-5100
Outer media tube, 100 mL	27-5110
Outer tube, 50 mL	27-5130
Outer tube, calibrated, 50 mL, class B	27-5135
Outer tube, 50 mL, low actinic - red	27-5160

Inner Sample Tubes (with Threaded Glass Ends)

Description	Part Number
Standard inner sample glass tube for 300 mL outer media tube	27-5000
Inner sample glass tube for 100 mL outer media tube	27-5010

Apparatus 7 Spring Holder, Alza

Description	Part Number
Spring holder, Alza, 1.45 in. L x 0.58 in. ID x 0.031 in. wire ID, spring offset	27-0100
Spring holder, Alza, 1.40 in. L x 0.31 in. ID x 0.040 in. wire ID, spring offset	27-0101
Spring holder, Alza, 0.96 in. L x 0.33 in. ID x 0.031 in. wire ID, spring offset	27-0102
Spring holder, Alza, 0.60 in. L x 0.25 in. ID x 0.031 in. wire ID, spring offset	27-0103
Spring holder, Alza, 1.00 in. L x 0.50 in. ID x 0.031 in. wire ID, spring offset	27-0104
Spring holder, Alza, 1.45 in. L x 0.58 in. ID x 0.031 in. wire ID, spring centered	27-0105
Spring holder, Alza, 1.40 in. L x 0.31 in. ID x 0.040 in. wire ID, spring centered	27-0106
Spring holder, Alza, 0.96 in. L x 0.33 in. ID x 0.031 in. wire ID, spring centered	27-0107
Spring holder, Alza, 0.60 in. L x 0.25 in. ID x 0.031 in. wire ID, spring centered	27-0108
Spring holder, Alza, 1.00 in. L x 0.50 in. ID x 0.031 in. wire ID, spring centered	27-0109

Apparatus 7 Disks and Rods

Description	Part Number
Pointed acrylic rod	27-3000
Transdermal patch holder kit	27-3001
Replacement acrylic rod kit	27-3002
1.6 cm ² reciprocating disk	27-8005
2.5 cm ² reciprocating disk	27-8010
5.0 cm ² reciprocating disk	27-8015
7.0 cm ² reciprocating disk	27-8020
10.0 cm ² reciprocating disk	27-8025
Angled disk, 1.98 in.	27-8035
Angled disk, 1.42 in.	27-8036

Apparatus 3 Replacement Screens for Inner Sample Tubes

Description	Part Number
Polypropylene screens, 1.25 in. dia. for 300 mL tubes, 20-mesh, 840 m	27-2000
Polypropylene screens, 1.25 in. dia. for 300 mL tubes, 40-mesh, 405 m	27-2005
Polypropylene screens, 1.25 in. dia. for 300 mL tubes, 56-mesh, 250 m	27-2007
Polypropylene screens, 1.25 in. dia. for 300 mL tubes, 78-mesh, 177 m	27-2010
Polypropylene screens, 1.25 in. dia. for 300 mL tubes, 100-mesh, 150 m	27-2015
Polypropylene screens, 0.75 in. dia. for 100 mL tubes, 20-mesh, 840 m	27-2200
Polypropylene screens, 0.75 in. dia. for 100 mL tubes, 40-mesh, 405 m	27-2205
Polypropylene screens, 0.75 in. dia. for 100 mL tubes, 78-mesh, 177 m	27-2210
Polypropylene screens, 0.75 in. dia. for 100 mL tubes, 100-mesh, 150 m	27-2215
Stainless steel screens, 1.25 in. dia. for 300 mL tubes, 10-mesh, 1905 m	27-2099
Stainless steel screens, 1.25 in. dia. for 300 mL tubes, 20-mesh, 864 m	27-2100
Stainless steel screens, 1.25 in. dia. for 300 mL tubes, 30-mesh, 533 m	27-2103
Stainless steel screens, 1.25 in. dia. for 300 mL tubes, 40-mesh, 381 m	27-2105
Stainless steel screens, 1.25 in. dia. for 300 mL tubes, 100-mesh, 140 m	27-2110
Stainless steel screens, 1.25 in. dia. for 300 mL tubes, 200-mesh, 74 m	27-2115
Stainless steel screens, 1.25 in. dia. for 300 mL tubes, 300-mesh, 46 m	27-2120
Stainless steel screens, 1.25 in. dia. for 300 mL tubes, 400-mesh, 38 m	27-2125
Stainless steel screens, 0.75 in. dia. for 100 mL tubes, 8-mesh, 2591 m	27-2300
Stainless steel screens, 0.75 in. dia. for 100 mL tubes, 10-mesh, 1905 m	27-2305
Stainless steel screens, 0.75 in. dia. for 100 mL tubes, 20-mesh, 864 m	27-2310
Stainless steel screens, 0.75 in. dia. for 100 mL tubes, 40-mesh, 381 m	27-2315

Baskets and Shaft

Description	Part Number
Basket shaft, mini	27-8600
Basket, mini, 40-mesh	27-8620
Basket, mini, 50-mesh	27-8621
Basket assembly, titanium	27-8622
Basket adapter, 3-clip, for BIO-DIS	27-2401

Upper and Lower Caps

Description	Part Number
Standard upper cap, USP, 300 mL, for use with p/n 27-5000	27-1000
Upper cap, 100 mL, for use with p/n 27-5010	27-1010
Standard lower cap, USP, 300 mL, for use with p/n 27-5000	27-1020
Lower cap, 100 mL, for use with p/n 27-5010	27-1030
Lower cap, wider diameter for improved mixing, for use with p/n 27-5000	27-1050

Evaporation Caps

Description	Part Number
Evaporation cap, USP, for 300 mL tube	27-1500
Evaporation cap, for 100 mL tube	27-1510
Evaporation cap, USP, tinted, for 300 mL tube	27-1520

Float-A-Lyzer Holder

Description	Comment	Part Number
Evaporation cap, USP, for 300 mL tube	For use with USP Apparatus 3	12-2068

Replacement Cannulas and Tubing

Description	Part Number
Replacement tubing kit, Apparatus 3/7, (for use with inline luer fittings)	27-0126
Replacement tubing kit, Apparatus 3/7 (for use with 1/4-28 inline fittings)	27-0127

Automated Sampling Replacement Tubings

Description	Comment	Part Number
Tubing assembly, female/lure to sampling cannula	For BIO-DIS 8-valve	1005-1952
Tubing assembly, male/lure to male 1/4-28	For BIO-DIS 8-valve	1005-1953
Tubing assembly, female 1/4-28 to return cannula	For BIO-DIS 8-valve	1005-1954

Vessel Carrier

Description	Part Number
Vessel carrier, for 300 mL tube, 7x2 layout, set of 3	27-6000

www.agilent.com/chem/dissolution

This information is subject to change without notice.

© Agilent Technologies, Inc. 2018
 Printed in the USA, November 1, 2018
 5994-0393EN