

Agilent Fully Demountable ICP-OES Torch

Simplifies maintenance while offering greater flexibility



Postponing torch maintenance and sample analysis because the chore is perceived to be time consuming?

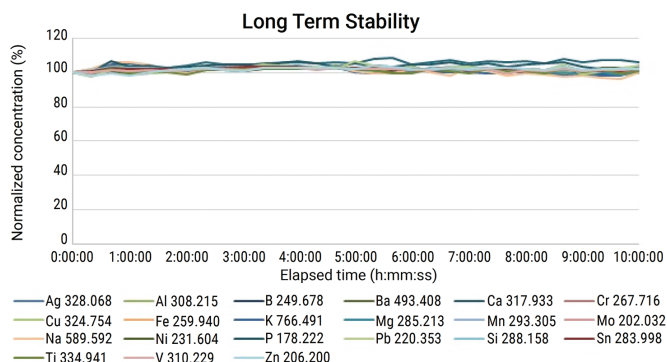
Agilent innovation for creating products with ease-of-use and uncompromised performance strikes again! The fully demountable torch for the 5000 Series ICP-OES features a removable injector to simplify torch maintenance and allows quick changeover for diverse sample matrices. Why remove the entire torch when the injector is the only component standing between getting results from organic solvents to fusions? The complexity of changing of the injector when switching applications or cleaning has never been easier.

Competitive demountable torches have a complex mounting, making injector removal/replacement and torch cleaning hazardous, complicated, and time-consuming.

The Agilent fully demountable torch takes the pain out of maintenance and is available for Agilent 5000 Series ICP-OES instruments. This design provides:

- **Flexibility** – A variety of injector materials and sizes to handle difficult and diverse application demands without loss of sensitivity or added complexity.
- **Greater productivity** – Tool-free installation simplifies injector maintenance without removing the torch from the instrument.
- **No manual optimization** – No need for manual adjustment or optimization, providing consistent results before and after injector replacement regardless of number of analytes.
- **Ease of maintenance** – Removable injector provides quick change-over without the need for diagrams or multiple O-rings and seals.

Fully demountable ICP-OES torch improves laboratory workflows



We measured a variety of used lubricant and hydraulic oil samples using an Agilent 5110 RV ICP-OES equipped with the fully demountable torch. The robustness was proved by analyzing the used oil samples continuously over 10 hours, using Co as an internal standard. The vertical torch configuration and 1.4 mm ID quartz injector ensured excellent stability with < 10% variation over all the results and long-term precision < 3% RSD for all 22 analytes measured. There was no sign of carbon build-up on the quartz injector during that period, confirming that maintenance requirements are less than competitive brands.

Agilent
CrossLab

From Insight to Outcome



Agilent fully demountable torch

Agilent fully demountable torch disassembled and shown with an alumina (inert) and quartz injectors.

The simple design allows analysts to easily remove the injector for cleaning and/or to switch injectors for another application. The removal/replacement of the injector is so simple it can even be done without removing the torch from the instrument.

Ordering information

Torch Kits	Recommended Use	Part Number
Easy-fit fully demountable DV torch with 1.4 mm ID tapered quartz injector: Includes a replaceable extended (high purity quartz) outer tube-set for organic applications with slot for radial viewing	Semi volatile organic solvents, e.g. kerosene, Jet A1, A-solv solvent	G8020-68002
Easy-fit fully demountable RV torch with 1.4mm ID tapered quartz injector: Includes a replaceable shorter (high purity quartz) outer tube-set for organic applications (no slot) for dedicated radial viewing.	Semi volatile organic solvents, e.g. kerosene, Jet A1, A-solv solvent	G8020-68007
Easy-fit fully demountable RV torch with 0.8 mm ID tapered quartz injector: Includes a replaceable shorter (high purity quartz) outer tube-set for organic applications (no slot) for dedicated radial viewing.	Volatile organic solvents, e.g. gasoline	G8020-68001
Easy-fit fully demountable DV torch with 2.4 mm ID tapered quartz injector: Includes a replaceable extended (standard) outer tube-set with slot for radial viewing, plus a spare outer tube-set.	High TDS samples	G8020-68004
Easy-fit fully demountable DV inert torch with 1.8 mm ID alumina (inert) injector: Includes a replaceable extended (standard) outer tube-set with slot for radial viewing, plus a spare outer tube-set.	Hydrofluoric (HF) acid digests and other aggressive acids	G8020-68003
Easy-fit fully demountable DV torch with 1.8 mm ID tapered quartz injector: Includes a replaceable extended (standard) outer tube-set with slot for radial viewing, plus a spare outer tube-set.	Most sample types including aqueous/acidic digests	G8020-68005

Description	Part Number
Injectors	
Replacement 0.8 mm ID tapered quartz injector	G8020-60805
Replacement 1.4 mm ID tapered quartz injector	G8020-60806
Replacement 1.8 mm ID tapered quartz injector	G8020-60807
Replacement 2.4 mm ID tapered quartz injector	G8020-60808
Replacement 1.8 mm ID inert alumina injector	G8020-60809
Outer Tube-sets – Includes intermediate tube (integrated into assembly) with top seal	
Outer tube-set – DV configuration, for use with aqueous/acidic digests	G8010-60263
Outer tube-set – RV configuration, for use with aqueous/acidic digests	G8010-60264
Organics outer tube-set – DV configuration, for use with organic solvents	G8014-60022
Organics outer tube-set – RV configuration, for use with organic solvents	G8016-60000
Other Parts	
Top seal for 5000 Series fully and semi demountable torches, pack/3	G8014-60023
Injector locking nut for fully demountable torch for 5000 Series ICP-OES	G8020-60810

To learn more about these fully demountable torches, visit:

www.agilent.com/chem/5100torches

DE44326.9413078704

This information is subject to change without notice.

© Agilent Technologies, Inc. 2021
Published in the USA, May 27, 2021
5994-1572EN